



FETtec Drift Car

Manual

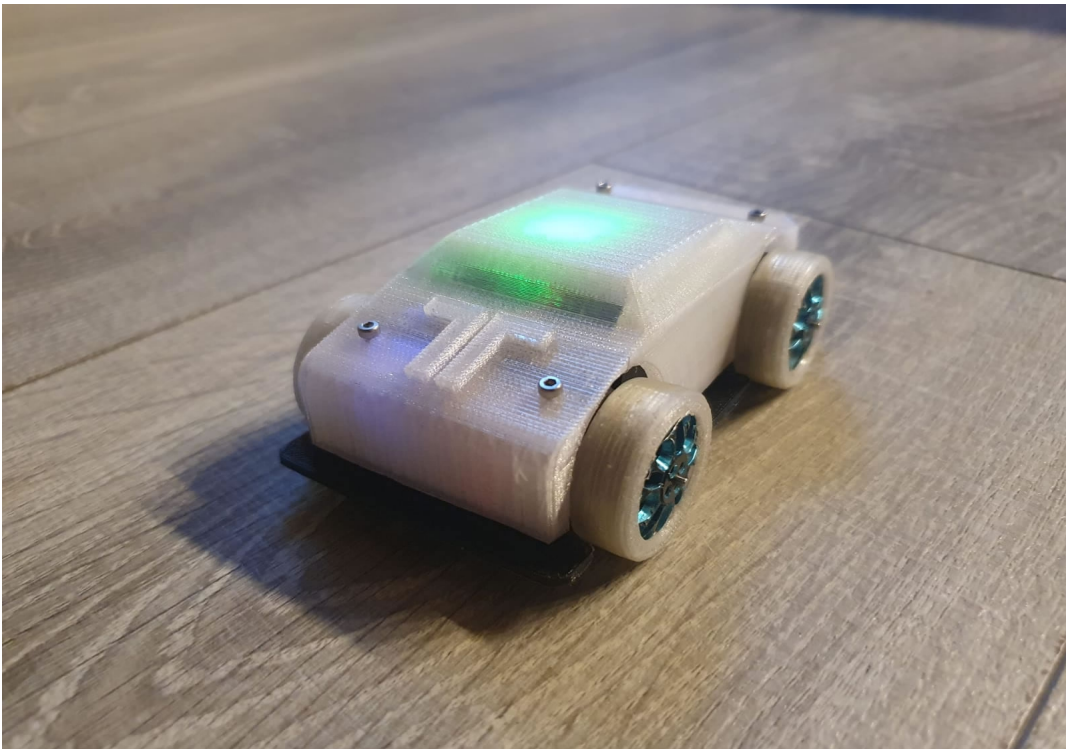


Table of Contents

Introduction.....	3
Required components:.....	3
Connection Diagram.....	4
FETtec Configurator.....	4
For the FETtec Drift Car set the following parameters:.....	5
KISS GUI.....	5
Recommended settings to start with:.....	5

Introduction

The FETtec Drift Car is a project to use the FETtec Mini AIO board as a direct drive control for small RC drift cars.

The FETtec Mini AIO 15A is used to build and control a RC car with unique drift and drive capabilities using only four brushless motors without any further mechanicals.

You just need to create your own chassis or use our example parts:

<https://www.thingiverse.com/thing:4685352>

Required components:

1x FETtec Mini AIO 15A board

4x 2004 1600-1800KV motors (every motor < 2000KV should work)

1x 1S Li-Po or Li-Ion Cell (18650)

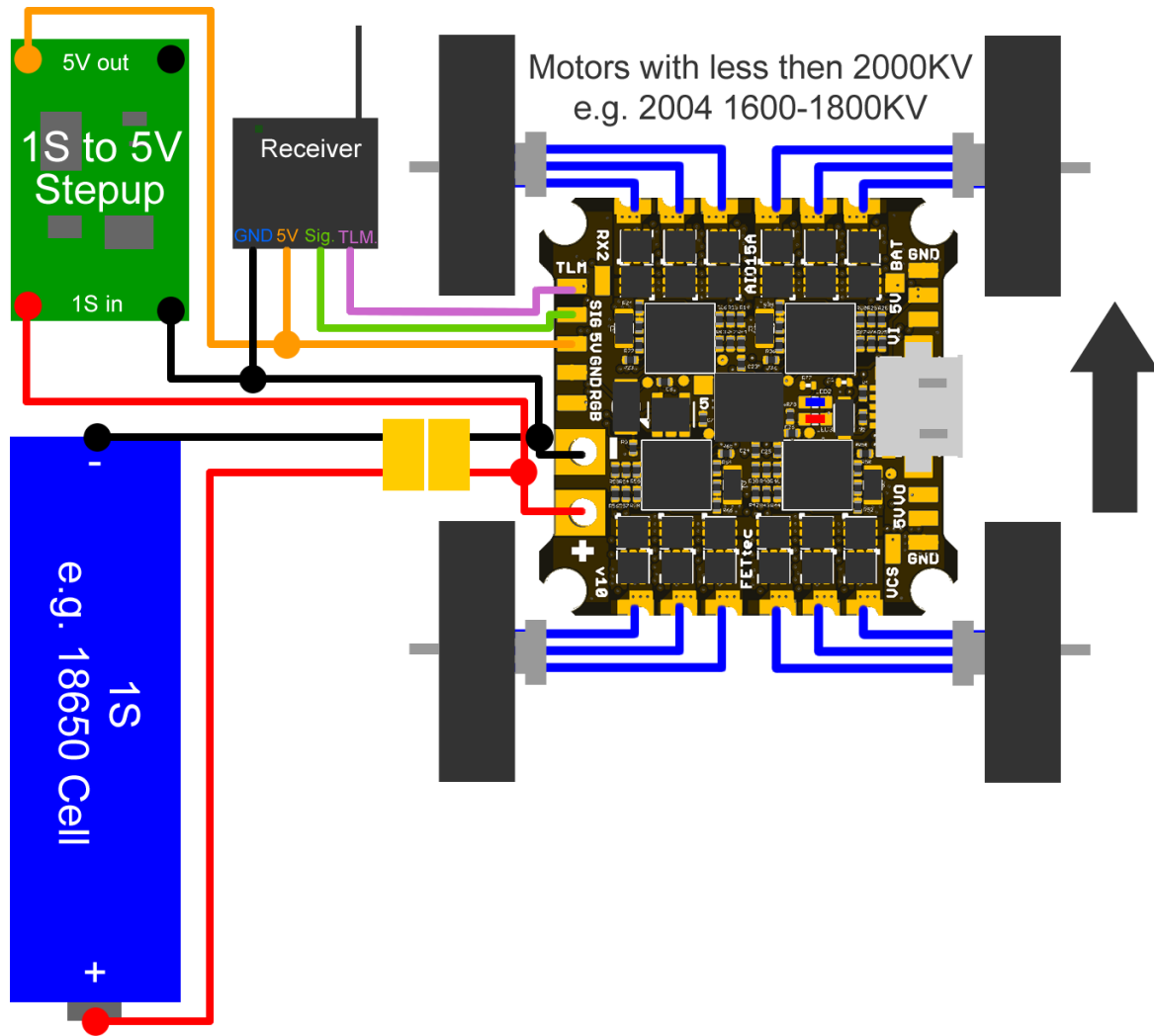
1x 1S 5V stepup converter

1x car chassis (3D printed parts or whatever you want to use)

1x receiver and transmitter (KISS FW compatible)

1x some wires and connectors

Connection Diagram



For further connection possibilities of the FETtec Mini AIO 15A see the main manual

FETtec Configurator

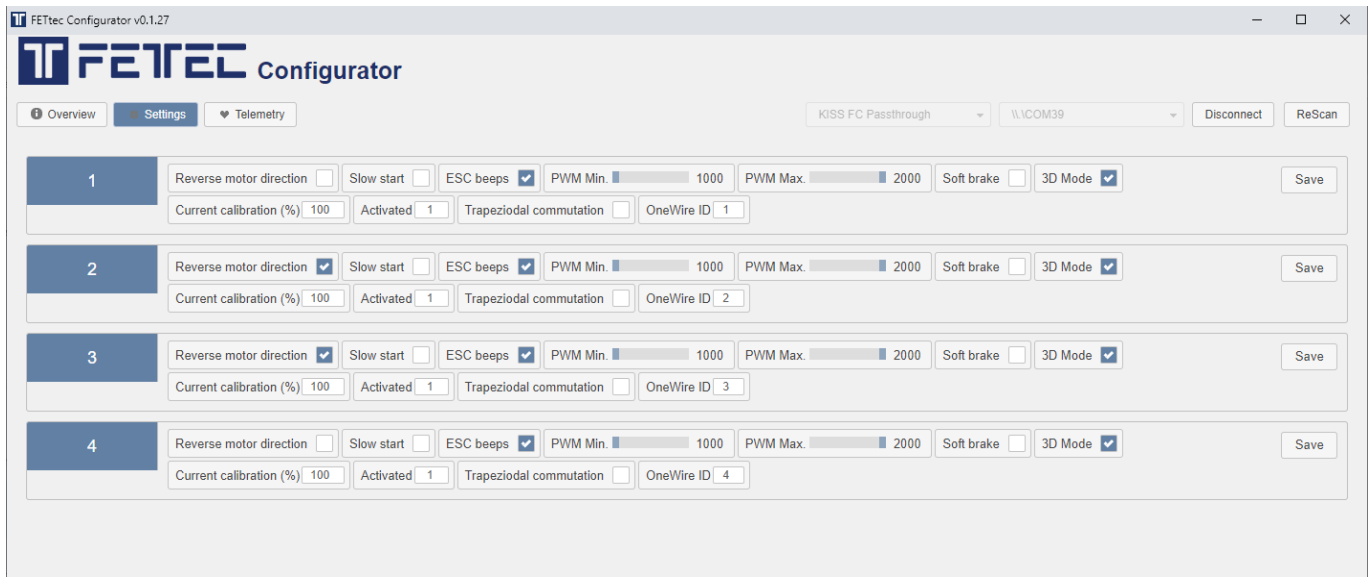
Please update the FETtec Mini AIO 15A before your first use !

Use FETtec ESC FW version 1.0.155 or above.

Use KISS FC FW version 1.3RC46a or above.

The FETtec Configurator is available for download at <https://github.com/FETtec/ESC-Configurator/releases>

For the FETtec Drift Car set the following parameters:



KISS GUI

Use KISS GUI 1.0.128 or above to set up the FETtec Mini AIO 15A.

The KISS GUI is available for download at <https://github.com/flyduino/kiss-gui/releases>

Recommended settings to start with:

