

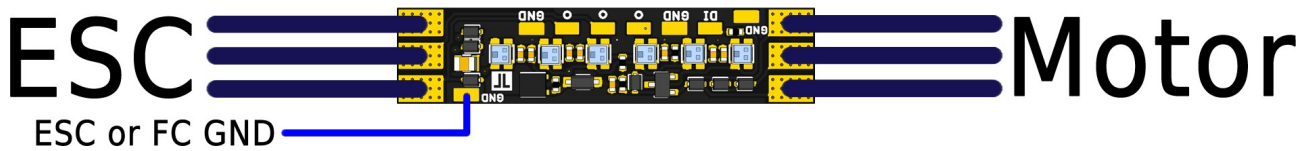
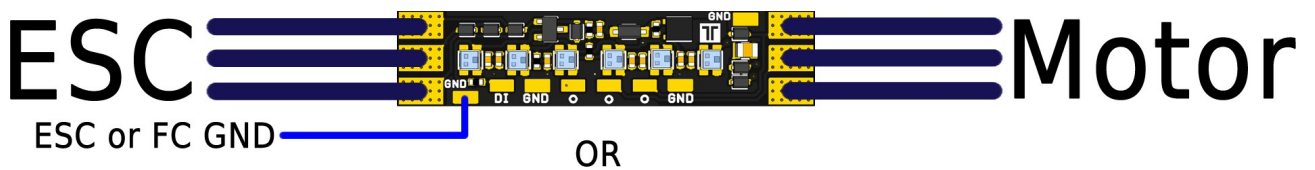


Race Wire 6

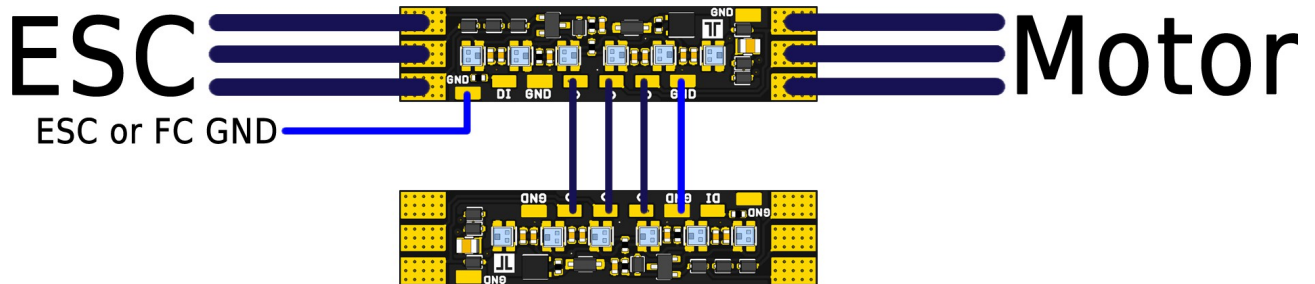
Low resistance Race Wire, providing 6 bright adressable RGB LEDs that can be controlled by a FETtec ESC. Any color and brightness can be set over the FC, GUI, OSD or a transmitter switch. It only needs one GND wire additional to the motor wires.

Size: 8x35mm

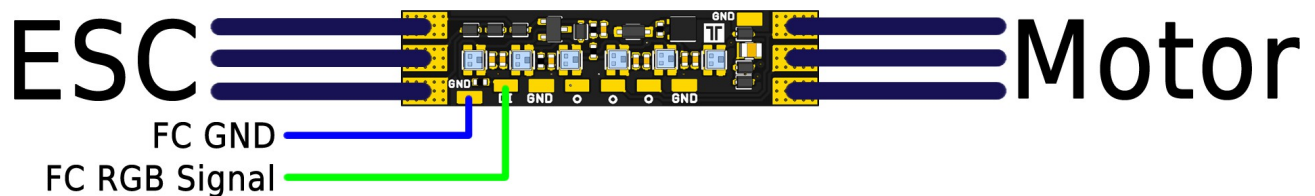
FETtec ESC connection:



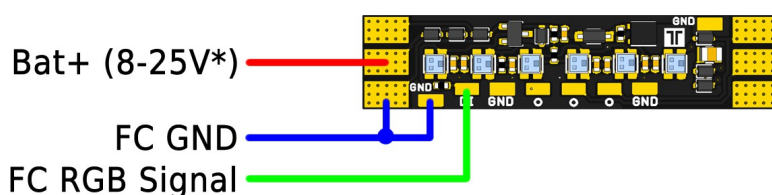
Two can be combined:



Alternative connction for use with ESC's that dont support FETtec Race Wire:



LED stick usage:



(*) 8-18V with no cooling.
8-25.2V when mounted in airflow of the propellers, or reduced brightness.