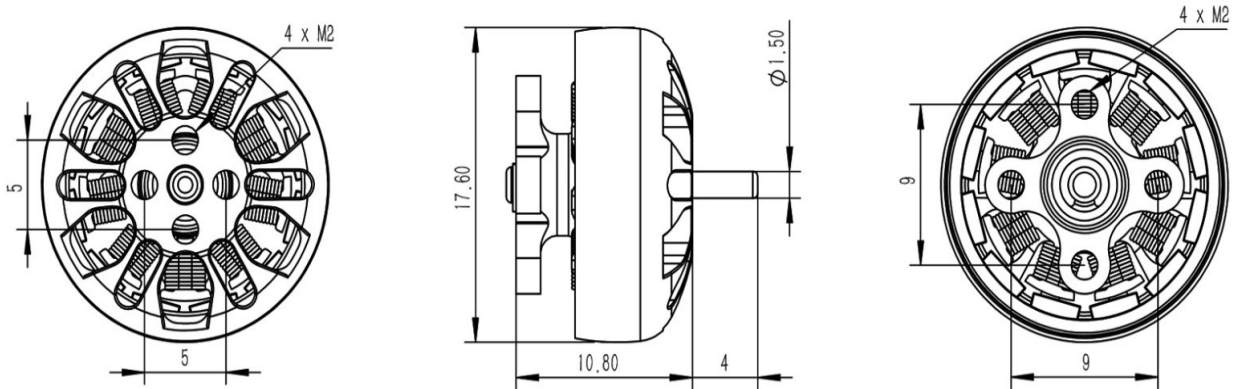


FETTEC 1303.6-5555KV

Technical Datas

KV	5555
Configu-ration	9N12P
Stator Diamter	13mm
Stator Length	3.6mm
Shaft Diameter	1.5mm(2mm inside)
Motor Dimension(Dia.*Len)	Φ 17.6*10.8mm
Weight(g)	6.4
Idle current(10)@10V(A)	1
No.of Cells(Lipo)	2S-4S
Max Continuous Power(W)3S	96
Internal Resistance	130mΩ
Max Current(3S)	8.6A
Max.Efficiency Current	(1.5-2A)>82%



Prop (inch)	Voltages (V)	Throttle (%)	Load Currency (A)	Pull(g)	Power(W)	Efficiency(g/W)	Temperature(in full throttle load 3 Secs)
GF2540	7.4	25%	0.8	67	5.9	11.318	54°C
		50%	4	165	29.6	5.574	
	11.1	75%	1.1	83	8.1	10.197	64°C
		100%	6.1	234	45.1	5.184	
GF3016*2	11.1	50%	1.55	106	17.2	6.161	61°C
		100%	5.5	253	61.1	4.144	
	14.8	50%	2	150	29.6	5.068	79°C
		100%	8	348	118.4	2.939	
GF3016*3	11.1	50%	1.3	104	14.4	7.207	65°C
		100%	6.3	271	69.9	3.875	
	14.8	50%	2.2	161	32.6	4.945	84°C(Hot)
		100%	8.5	351	125.8	2.790	
HQ 3*2.5*3	7.4	50%	1.2	77	8.9	8.671	64°C
		100%	6	196	44.4	4.414	
	11.1	50%	2	118	22.2	5.315	85°C(Hot)
		100%	8.6	274	95.5	2.870	